

newsletter

Friern Barnet & Whetstone Residents' Association



In this issue

1 - Friary Park phone mast 2 - 3 Road marking in Barnet

4 - 74 Holly Park Road

Friary Park planning victory - the Council agreed with your residents' association objections

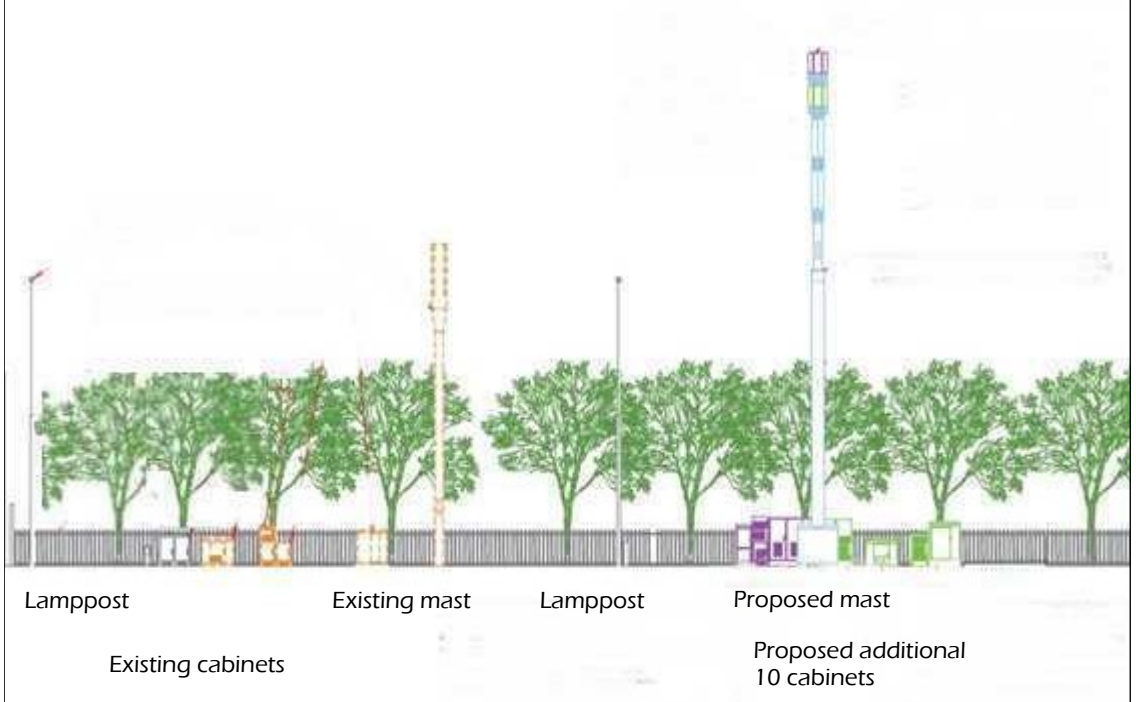
Barnet Council's Planning Department has rejected an application for planning permission to replace the existing 12.5 m. telecoms mast near the Friern Barnet Lane entrance to Friary Park with a taller, 20m. mast and 10 equipment cabinets after objections from FBWRA and local residents.

In addition to being much taller than the current mast, the new one would have been in a much more prominent location, standing in the grass verge near the roadside rather than

being set back immediately adjacent to the line of trees that run along the boundary of the Park. Ten equipment cabinets clustered around the installation would have cluttered the pavement area.

FBWRA asked the Council to refuse the application on the grounds that the installation would be an ugly and intrusive addition to the street scene, commenting that "The proposed locations for the cabinets and the mast are probably the most intrusive that could be chosen in this site."

The Council Planning Officer's report on the application agreed with our objections: "The proposed monopole [mast] and associated equipment would, by reason of their excessive height, siting and appearance, appear as a



Artists impression of the proposed additional communications mast and 10 new communications cabinets. Fortunately, the proposal was rejected.

prominent and visually obtrusive feature within the street scene". "The proposal would therefore have significant adverse impact on the character and visual amenities of the surrounding area, contrary to [Barnet's planning policies]".

The Planning Officer was also concerned the mast would damage the nearby protected trees, which "are important in terms of visual amenity of the park and may be impacted by the proposal, either by root damage or upper crown pruning. A 20m high phone mast will require a significant foundation and it is this excavation which is of primary concern."

Well done, Barnet!

DT

Friern Barnet and Whetstone Residents' Association

- We are non-political
- We work for all residents in the area
- We discuss issues with Local Councillors and Council Officials
- Associated with the following bodies
- The Federation of Residents' Associations of Barnet
- The Finchley Society
- Friends of Friary Park
- Open Spaces Society
- The Friern Barnet & District Local History Society
- Coppetts Wood Conservationists
- The London Green Belt Council
- Love Whetstone

Neglect and decay on Barnet's roads - the Council needs



Friern Barnet – footpath/cycleway between Glenthorne Rd and Stanford Rd. The marking is meant to warn pedestrians of the presence of cyclists.



Whetstone - almost invisible right turn markings, junction of High Road and Oakleigh Road North



Whetstone - Friern Mount Drive/ Buckingham Avenue junction marking

Like perhaps every local authority in the country, Barnet is short of money, and the consequences of a reduction in funding from central government have been exacerbated by a political determination (which, it must be said, many welcome) to keep Council Tax low. One of the results of these choices is a marked deterioration in the condition of the road markings in our area, many of which are important for highway safety, as you can see from the accompanying pictures, taken recently in Whetstone, North Finchley and Friern Barnet.

Whilst cost savings in a time of austerity (a consequence of the global financial crisis of a decade ago) are inevitable, it is clear from the pictures below that the condition of many of Barnet's road markings is very bad. Although, in the circumstances, it would be unreasonable to expect all road markings are kept in first class condition at all times, it is worrying that we saw no sign of a local "rolling maintenance programme" being followed by the Council - generally all the road markings in the area are in poor condition. Without an adequate maintenance programme they will continue to deteriorate.

Poor markings can be hazardous, particularly at night. Our view is that the Council's highways department is often reluctant to tackle hazards until they give rise to accidents. Will some poor soul pay the price?

Highways maintenance is the responsibility of the Council's Environment Committee, chaired by Councillor Dean Cohen (email: cllr.d.cohen@barnet.gov.uk)

DT

to embark on a rolling programme of maintenance



Whetstone - Oakleigh Park North. A warning marking in poor condition.



Whetstone - Oakleigh Road North. Another warning marking in poor condition.



North Finchley - High Road. One of the few new markings- parking bays, not safety markings



Friern Barnet - Ashurst Road. Almost invisible markings are of little assistance at night.



North Finchley - Kingsway. Hard to read direction markings.

but road signage can be done properly



North Finchley - Stanhope Road. A newly painted marking. "Compare and contrast with the others!"

Local residents express concern about basement conversions

On Sunday 18th August at about 11 p.m. residents in Holly Park Road heard a loud crash. A number went out to the road to see what had happened. What they saw was that the front wall of 74 Holly Park Road had partially collapsed. One resident phoned the fire service, another resident phoned Barnet emergency services and third resident phoned the landlord of number 74. Within a few minutes two fire engines arrived and a third arrived soon after.

Jim Corrigan, local resident at number 80, was passing at this time. When he heard the bang, he looked to see what had happened, then saw part of the front wall fall off. He was lucky, for as he was heading home he used the other side of the road. At this time he was only 15 yards from his front door. Had he been walking home on his side of the road, the bricks and mortar may well have fallen on him.

Barnet Council were also lucky, for they approved of the conversion of 74 Holly Park Road from a 3 and a half storey building to a 5 storey building. The houses in this road were constructed in the late 19th Century and they do not have substantial foundations.

During the night the authorities were so concerned about the safety of the residents at number 72, they told them to spend the night elsewhere.

Through the early hours of the morning scaffolding was erected to shore up the front of the building. This work continued to the middle of Monday morning. The residents at number 72 were allowed to return to their flats that evening.

Barnet Council were lucky a second time. This part of the road is used by school children on their way to Holly Park School, which just around the corner in Bellevue Road. Had this collapse happened at around 8:30 to 9 on a school morning Barnet Council would be in big trouble.



Your Residents Association and many local residents objected to the development, on the grounds that it was unsuitable to convert a family house into three apartments. Council officers approved this conversion planning application.

In future, let us hope that there are no more approvals for digging out basements in Holly Park Road.

HG

Forthcoming Events

Incognito Theatre, Holly Park Road Performances are Sunday at 6pm, Monday - Friday at 8pm, Saturday at 3pm and 8pm. 22 - 28 September 2019..

[A Triple Bill](#)

[Swan-song](#) by Chekov, directed by Jennie Mendé; [The Proposal](#) by Chekov, directed by Jennie Mendé

[The Regina Monologues](#) by Rebecca Russell and Jenny Wafer, directed by Andrew Robinson

FRIERN BARNET & DISTRICT LOCAL HISTORY SOCIETY

start 7:45 p.m. **Wed 23 Oct** **Street Names of Soho and the West End** (by Rob Kayne)