

January 2009

## Friern Barnet and Whetstone Residents' Association

- We are non-political
- We work for all residents in the area
- We discuss issues with Local Councillors and Council Officials
- Associated with the following bodies
  - The Federation of Residents' Association of Barnet
  - The Post Office Advisory Panel
  - The Finchley Society
  - Friends of Friary Park
  - The Friern Barnet & District Local History Society
  - Coppetts Wood Conservationists
  - The London Green Belt Council
  - North Finchley Local Agenda 21

## Colney Hatch Lane cleared of parking hazards

*Six year campaign by local residents results in double yellow lines in Colney Hatch Lane next to entrance to Tesco*

After years of campaigning, local residents have finally got the Council to install double yellow lines on both sides of the road near to the Colney Hatch Lane entrance to Tesco's. Driving into our local superstore is not the hair raising experience it once was.

For the last six years, residents near Tesco's in Colney Hatch Lane have complained to Barnet Council about traffic problems in the area. One of the main ones had to do with cars and vans parked on both sides of the street in that part of Colney Hatch Lane. Members of your Association driving to Tesco's on Colney Hatch Lane have had to negotiate a around parked cars and vans between Poplar Grove and Firs Avenue.

A couple of years ago, double yellow lines were installed on the eastern side of Colney Hatch Lane, and since November 2008 double yellow lines have been installed on both sides of the road.

Although all drivers going to Tesco's were affected by the parked vehicles on Colney Hatch Lane, local residents in Regal Drive, Firs Avenue and Balmoral Avenue were the most affected. Innumerable phone calls were made to Council officers pointing out difficulties local residents were having. Representations were also made to local Councillors. Indeed, Cllr Kate Salinger at that time made considerable efforts to get the first set of double yellow lines.

However, at a meeting with Deputy Leader Cllr Matthew Offord early in 2008, called "The Leader Listens", the problems were described once more. Cllr Offord promised to look into the matter and eventually, after more phone calls and e-mails, action was finally taken by the Council.



*Today the road is clear between the entrance to Tesco and the box in front of the Ambulance station.*



*A couple of years ago the road leading into the Tesco entrance*

# Whatever happened to the Bethune Park golf course?

## Council inaction is letting old Golf Course lie idle

Officers of your Association have been asked recently about what is happening to the old golf course above Bethune Park. The fencing that separated the golf course from the rest of the park is still in place. However, there are no signs indicating what the current or future usage of the old golf course might be.

We know that the Council tried to get rid of its three golf courses a few years ago, and since then nothing much has happened on the Bethune Park golf course, except for the golf club hut being demolished and the water pipes being removed after several leaks were reported to the Council by Association members.

The golf course constitutes the most attractive part of Bethune Park; it is hilly and has many fine mature trees which have obviously been well cared for in the past. A visitor to the old golf course will find the gate open and a pleasant park, with fine views over Friern Barnet.

Officers of your Association think that the Council incorporated golf course into Bethune Park proper and advertise it as being open to the general public with signs erected at the Park entrances. Further, the Council should let local residents know what it plans are; or, if the Council has no current plans for the old golf course they should formulate some.

So, what is the situation with Barnet's other golf courses? At a Council Cabinet Resources Committee Meeting on 21 July 2005, it was recommended that a tender from Messrs Ian Leo Scagnelli and Paul Alexander Scagnelli for Oak Hill Golf Course and Bethune Park Golf Course be accepted; and, that a tender from Golfwise Ltd for Tudor golf course be accepted.

The Tudor Park golf course is located within Tudor Park, which is most easily accessed from Tudor Road in New Barnet. This golf course is in use and there is signage stating that it is a "Golfwise Centre".

The Oakhill golf course is located on the east part of Oakhill Park and is most easily entered from Parkside Gardens. Access to the golf course was locked, as was the golf hut, on the weekend when we visited. There was no sign that it had been in use. In fact there was a letter, dated two weeks earlier, addressed to the Facilities Manager, stuck in the wire mesh fence. The golf course makes up the most attractive part of Oakhill Park and obviously should revert to being part of the Park with free public access.

On the whole Barnet Council's whizz-bang plan to rid itself of its golf courses has proved a bit of a damp squib.



*These pictures show some of the fine trees on the old Bethune Park golf course*





# Council allows large commercial waste bins to be stored on Whetstone High Road

## Reckless implementation of Council waste policy creates eyesore in Whetstone and endangers ancient monument

For a number of years local residents have complained to the Council about Whetstone High Street being used for permanent storage of bright orange commercial waste bins. The area being used is on the pavement alongside the slip road which passes the Griffin public house and a number of restaurants and other places which serve food and drink. It is not known which, if any, of these establishments uses these waste bins.

One of your Association's officers visited the site on 3 January 2009 at 1:00 p.m. and can report that the following items had been left on the pavement:

- 4 large red Biffa bins
- 2 small (household size) grey Biffa bins
- 4 small (household size) red bins
- 3 black plastic bags
- 1 large red NSM bin
- 1 medium grey bin labelled LBB

Using the street for permanent storage of waste bins doesn't happen elsewhere in the Borough, so why has the upmarket town centre of Whetstone been selected for special treatment? All the other 31 boroughs in London have a strict policy on waste collection and give commercial customers a specific window when they may leave waste on the street for collection. It is hard to accept that the Council doesn't know anything about the mess, as Barnet House, which provides offices for many Council workers, is just over the road.

The officers of your Association have made many representations to the Council Officers by letter, email and telephone. One Council Supervisor said, "I can confirm that our policy in respect of domestic and commercial wheeled containers being left on the public highway is that all bins should be returned to the within boundary of the property after collection has taken place." At the time of writing we were told that this was a matter to be handled by "Highways Enforcement", but we have yet to hear from them.

The opinion of your Association is that Barnet Council should rigorously enforce its stated policy. If catering (or other) establishments have opened for business without



*Pizza Express and the Griffin public house are attractive buildings spoilt by waste bins*

considering the implications of not making provision for the storage and disposal of waste then they will have to pay the consequences. If necessary they will have to put the waste in plastic bags and pay the council or a private contractor to collect the waste daily from their premises. There would be no need for the refuse to be left on the pavement except for a limited window of time to be advised by the council. In giving planning permission for eating and drinking establishments the Council should ensure there is proper provision for the removal of waste.



*With one large bin parked in front of the "stone" there is insufficient*

### Whetstone in danger

Besides being a potential safety hazard, the large refuse bins filled with heavy materials have been placed next to Whetstone's ancient monument, the "Whetstone" itself. Moving these heavy cumbersome waste bins to be loaded and emptied and replaced is an obvious hazard to the ancient monument. No doubt the operatives move the large waste bins as carefully as possible, but accidents do happen and inevitably the ancient monument will be damaged, if not destroyed, if this situation is allowed to continue.

## Time for Tesco in Friern Barnet to get its act together

Isn't it time our local Tesco gave us a fair crack of the whip? We have been told that the Friern Barnet Tesco is one of the most profitable in the country, so they have plenty of money. We ask, why is the place such a mess and why are their petrol prices so high? We have been told the litter is cleared up once a week. It should be thoroughly cleared once a day and if that doesn't get rid of the unsightly mess then it needs to be cleared more frequently. We would like to know why the Tesco in Friern Barnet charge 5% more for its petrol, than the Tesco in Edmonton, five miles away.

The petrol retailers were quick to raise their prices when the price of crude oil went up. However, now that the price of oil has fallen from \$147 a barrel in July 2008 to \$49 a barrel on 11 January 2009, why are they so slow to lower their prices?

We know that, on the whole, the people of Friern Barnet and environs are richer than the people of Edmonton, hence they can afford to pay more for their petrol. But, our Tesco need to lower their petrol prices, for even in Friern Barnet, "every little helps".

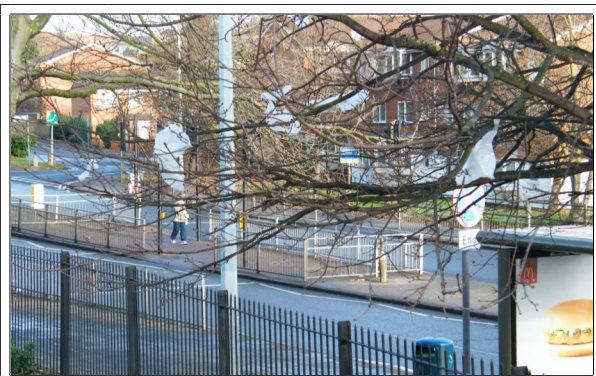
HG



*Plastic bags litter the car park*



*11 January 2009—Tesco Friern Barnet petrol prices*



*Plastic bags in the trees are a hazard to birds and bats*



*11 January 2009—Tesco Edmonton petrol prices*

### FORTHCOMING MEETINGS OF FRIERN BARNET AND DISTRICT LOCAL HISTORY SOCIETY

Wed 28 January 2009  
St. Pancras  
by John Neal

Wed 25 February 2009  
100 Years of the North Circular Road  
By Reg Hart

All meetings take place at St John's Church  
Hall, next to Whetstone Police Station,  
Friern Barnet Lane. Starts 7:45 p.m.;  
cost £2 to non-members.

### incognito theatre

Sunday 1st February to  
Saturday 7th February

#### Our Country's Good

by Timberlake Wertenbaker

Performances start at 8 p.m.,  
except Sunday when  
performance starts at 6 p.m.

Incognito Theatre is located in  
Holly Park Road (behind the  
Health Centre) Friern Barnet,  
London N11 3EB  
Tickets 0791 287 5700

### Contacts

Correspondence  
Chairman FBWRA  
33 Holly Park Road  
N11 3EY  
hgluck@heavenlybody.demon.co.uk

Membership FBWRA  
112 Oakleigh Road North  
London N20 9EZ  
brucestanding@msn.com

Press Officer  
153 Friern Barnet Lane  
N20 0NP  
l.e.bull@hotmail.co.uk